



St. Joseph's  
College Echuca

STRENGTH & KINDLINESS

# College Directors' Package



*A Kildare Education Ministries  
Catholic secondary school in the  
Brigidine Tradition*







Welcome	3
College History	4
Our Story	4
The Aim and Mission of Catholic Education	5
The Philosophy and Distinctive Nature of the Catholic School	5
The Emergence of Kildare Ministries	6
New Leadership Structure	7
Our Mission and Values	8
Identity Statement	8
Our Vision	8
Kildare Ministries Core Values	8
Echuca Moama	9
Education In Faith	11
Learning at St Joseph's College	12
Year 7: Foundation	12
Year 8 and 9: Exploration	13
Year 10: Pathway	13
Year 11 and 12: Consolidation	13
Academic Pathway	13
Applied Learning Pathway	13
School-Wide Positive Behaviour Framework: 'Respect, Commit, Be Grateful'	13
Co-Curricular Programs	14
Student and Staff Profiles	15
House and Pastoral Care Structure	16
Houses	16
Learning Mentor Program	16
Facilities and Master Plan	17
Setting foot on new ground	18
Application Process	20
Selection and Appointment Schedule	20

# Welcome

---



Welcome to St Joseph's College Echuca. Thank you for expressing interest in applying for a leadership position with us.

St Joseph's College, a Kildare Education Ministries Catholic co-educational secondary college in the Brigidine tradition, is a dynamic, welcoming and hope-filled school that promotes excellence and equity, so that all students can become confident, creative and critical thinkers.

Steeped in our Catholic and Brigidine heritage, St Joseph's College has provided quality education and a vibrant community for the families of northern Victoria and southern New South Wales since 1886.

---

***Our future orientated programs and facilities advance young people's gifts and talents by providing an exciting and challenging range of opportunities to develop spiritually, academically, emotionally and socially.***

---

Close links with the local community, businesses and training providers promote an engagement with the world that is both appropriately flexible and enlivening.

In 2023, St Joseph's embarked on an exciting new era as we became a multi campus College. By applying for a position at our school you have the opportunity to play an integral role in our distributive leadership team, as we guide our staff, students and community through this pioneering period of growth and innovation.

Beyond our school gates you'll find a progressive and family-friendly Echuca Moama community, where you can reap the rewards of a country lifestyle without forsaking vibrant city offerings.

We look forward to welcoming you.

**Ms Anne Marie Cairns**  
Principal



# College History

---



## Our Story

The St Joseph's College story begins in 1886, when a group of brave young Brigidine sisters sail the treacherous seas from Ireland to Australia to establish Catholic education in Echuca.

The Brigidine Sisters were founded in Tullow, Ireland, almost 200 years earlier by Bishop Daniel Delany who placed his congregation under the protection of Saint Brigid. St Brigid lived in Ireland in the fifth century and was a woman of great initiative and faith. Her sense of compassion, social justice and generosity were legendary, and those values continue to guide our way today.

When Mother Borgia Hayden, Mother Benedict Moore, Sister Vincent Brennan and Sister Thomas Healy left their dear convent and their loved mothers and sisters in Tullow, they could never have predicted the incredible legacy they would create at their new and distant home in Echuca.

After two long months of travelling, the nuns were warmly welcomed by a crowd of 500 residents before taking up residence in Apsley House, the former home of Henry Hopwood, the founder of Echuca.

And so it was that the Brigidine Convent High School (as it was originally known) opened in the convent parlour in March 1886 with only 8 pupils. Six weeks later the girl's boarding school was opened and by the end of the first year student numbers had increased to 30 in the high school and 30 in the primary section of the school.

By 1960 our boarding numbers had grown to more than 60 and we saw the closure of the primary section, with all primary students transferred to St Mary's Parish Primary School.

From 1961, St Joseph's College continued to grow with the addition of new buildings and portable classrooms to house Science rooms, Arts/Music and Technology classrooms and a library.

The College ceased to be a boarding school in 1988, marking the end of more than 100 years of boarding at the site.

In 1993, the convent (built in 1888) was refurbished and turned into the administration area and classrooms. By this stage the sisters had taken up residence in the set of units across the road.

In 1996, the first lay principal was appointed and in 2005 the College purchased the property at 33 Dickson Street, now known as Cill Dara which is our Learning Enhancement Centre.

In 2013 our most extensive building operation was undertaken to prepare new learning areas for Health/PE, Allied Health and Music Technology. This multipurpose building was aptly named The Oak Centre and for the first time in a number of years the College had an assembly place where all students could gather together and be protected from the weather elements.

### The Aim and Mission of Catholic Education

Education plays a critical role in the transmission of culture. The Catholic school has the responsibility of transmitting culture in the light of faith and of integrating faith and culture in the life of the young person. Its aim and purpose clearly are to assist the Church in its mission of proclaiming the Good News of Jesus Christ to the world. It exists principally for the purpose of evangelisation and has an irreplaceable role in handing on the faith from generation to generation.

Situated within a secular society, the Catholic School is charged with forming individuals to take their place in that society as responsible citizens and effective Christian witnesses.

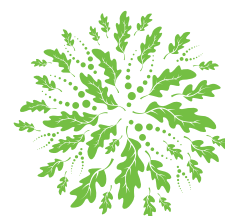
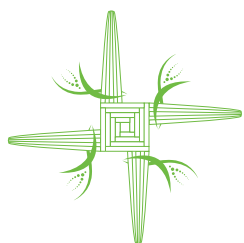
---

***It strives to develop the students as people who, in their family life, in their work and in their neighbourhood, will have the knowledge and skills to transform society into a more just and peaceful society.***

---

### The Philosophy and Distinctive Nature of the Catholic School

Good education needs to be holistic in its approach - cognitive, affective and behavioural. It is a dynamic activity and is not hierarchical. All people involved in the education activity are being formed - not just the student.





## College History

---

There needs to be something distinctive about the Catholic school, evident in its attention to the personal formation of each student; in the relationship established between culture and the Gospel; in the illumination of all knowledge with the light of faith. In a particular sense this should translate into the development of a Gospel-inspired community; praying and celebrating community, a community that reflects compassion and forgiveness, care and a balanced sense of justice - all of which are integrated within the school climate and its curriculum.

Priority to a pastoral care that is adaptive to the needs of young people is an essential element in the Catholic school. Respect and concern for the individual are central to the education process. Each person has the right to realise their potential; a right to the achievement of self understanding and self confidence, not just contributing to society but aspiring to develop it in the context of the Christian value system which should permeate each Catholic School.

### The Emergence of Kildare Ministries

From its very beginning, St Joseph's College has always been a co-educational, Brigidine school, committed to teaching the Catholic tradition but always open to people of other faiths. It has offered a very sound and broad education, consistently seeking out the needs of the students of the time. It has promoted academic excellence while at the same time catering for the cultural needs of the students. St Joseph's College, Echuca is at the forefront of educational innovation, pursuing the best possible ways to educate young people in the 21st century.

In September 2013 Kildare Ministries was established by the Holy See as a Public Juridic Person (PJP) at the request of the Congregation of the Sisters of St Brigid (Brigidine Sisters) to succeed and to carry on the ministries previously conducted by the Brigidine Sisters in Australia. Its civil incorporation is under the Roman Catholic Church Communities Lands Act 1942 (NSW) under the name Trustees of Kildare Ministries (TKM). In March 2014 the Victorian Institute of the Sisters of the Presentation of the Blessed Virgin Mary (Presentation Sisters) was accepted as the second member of TKM. As a PJP, the Trustees of Kildare Ministries is the Catholic Church authority for the ten schools and three community works previously conducted by the Brigidine and Presentation Sisters.

In April 2014, Kildare Education Ministries (KEM), a public company limited by guarantee under the Corporations Act 2001 (Cth), was incorporated to govern the Brigidine colleges in Victoria and South Australia. The board directors of KEM are appointed by TKM to govern the colleges in the areas of education, finance, property and employment responsibilities and to plan for the ongoing development of the colleges. As such, KEM is the civil authority for each of the seven schools. KEM has reserve powers in areas such as the ratification of the appointment of a principal and approval of capital loans.

---

***Each college conducted by KEM is responsible for the Catholic ethos and mission of the school and for the administration of the temporal goods assigned to it for its work.***

---

The Stewardship Council of each school has delegated authority from KEM to act in an advisory capacity on matters such as policy, strategic planning, annual budget recommendations and community liaison.

The principal of each school has delegated responsibility from KEM to employ and supervise staff and to lead the College in the areas of faith and mission, stewardship of resources, wellbeing of the community and compliance and risk management.

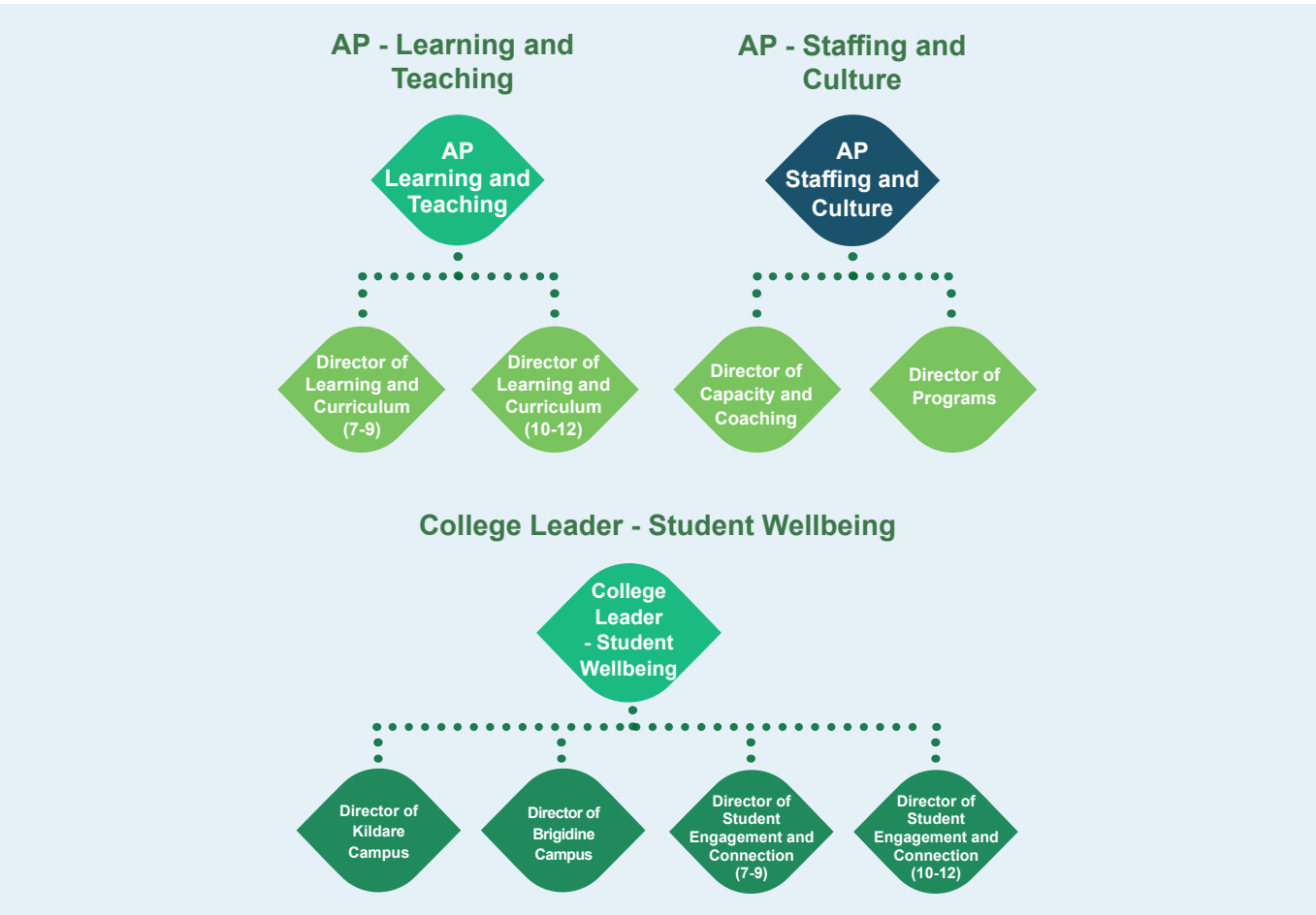
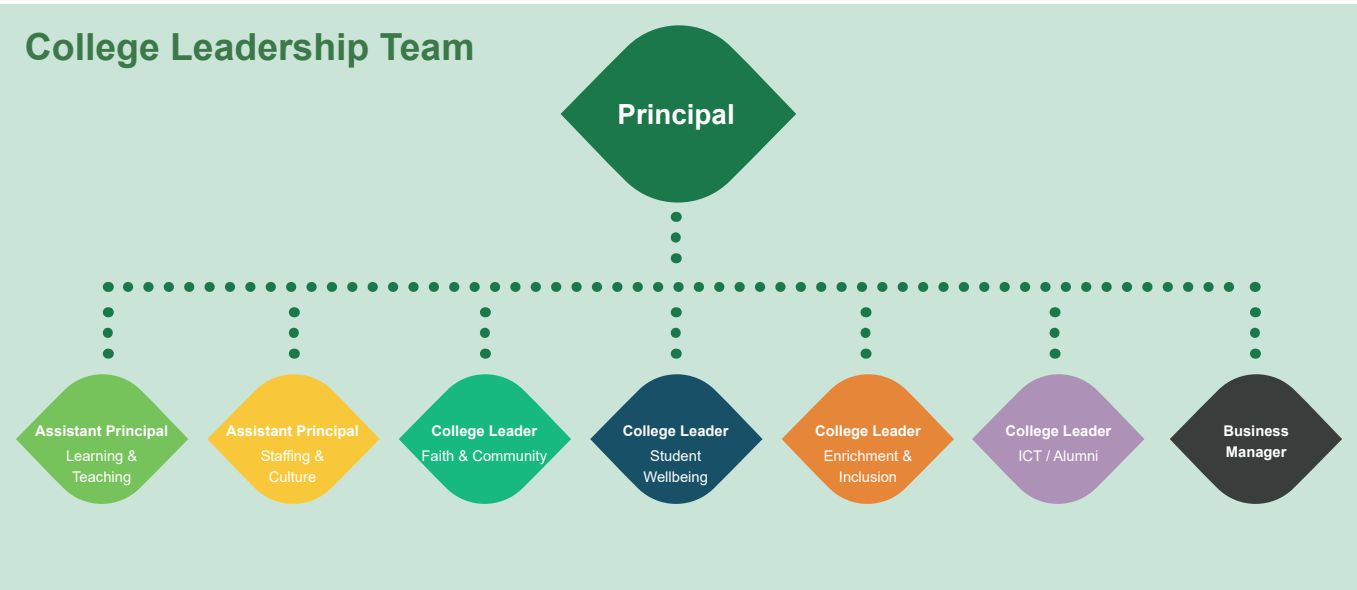
As our journey unfolds as a Kildare Ministries school and as our Brigidine tradition becomes one with the traditions of the Presentation Sisters we endeavour to learn more about the role of their founder Nano Nagle, and to engender her values as a woman of great courage and a woman of the Cross. Nano established secret schools for poor children in Cork, Ireland at a time when access to Catholic education and employment was limited by the penal laws. By challenging the unjust social and political structures that make (and keep) people poor, her hope was that education would enable the children to engage more fully with life.

# New Leadership Structure

Significant population growth in Echuca Moama has led to an increased demand for Catholic education.

The establishment of our new Kildare Campus in 2023, is more than just an exciting opportunity for our community to receive greater access to quality and contemporary learning.

It is also an incredible opportunity for passionate and collaborative leaders to progress their career and join our new leadership team.



# Our Mission and Values

---

## Identity Statement

To challenge and empower students to be creative and critical thinkers who act with strength and kindness in the Gospel tradition.

## Our Vision

We envision an inclusive Catholic Learning Community where all people are valued, where all creation is sacred, where the pursuit of personal excellence is paramount, and where our core values of wonder, courage, justice, hope, compassion and hospitality are our hallmarks.

*The College motto 'Strength and Kindliness' derives from that of Bishop Daniel Delany of Kildare (Ireland), who founded the order of the Sisters of St Brigid in 1807.*

St Brigid, who lived in Ireland in the fifth century, was a woman of great initiative and faith, and her sense of compassion, social justice and generosity were legendary. Similarly, the life and work of the venerable

Nano Nagle, the Lady with the Lantern, ignites a passion to challenge the unjust social and political structures that make and keep people poor.

At St Joseph's College we hope to inspire students to live 'in the footsteps of Daniel, Brigid and Nano' with courage and conviction. In this way, we are inspired by the Kildare Ministries Core Values.

## Kildare Ministries Core Values

- Compassion - walking with and having empathy for all
- Wonder - celebrating all that is good with joy and gratitude
- Justice - making the needs of the vulnerable paramount
- Hope - bringing a sense of purpose
- Hospitality - welcoming all
- Courage - speaking and acting with integrity





# Echuca Moama

---

Echuca Moama are twin towns nestled along the banks of the mighty Murray River, surrounded by ancient river red gums and some of the most breathtaking scenery imaginable. They are the closest riverside communities to Melbourne, at approximately 2.5 hours drive, and just under 8 hours drive from Sydney, and an easily accessible holiday haven.

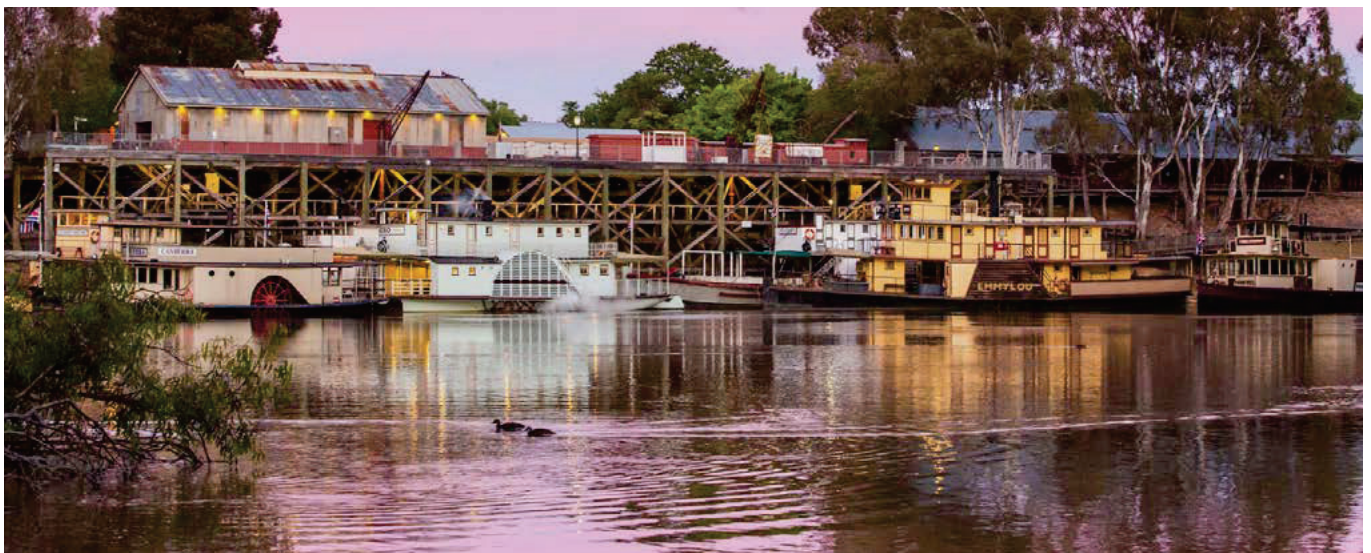
The romance of the river is alive and well in Australia's paddle steamer capital, and the border towns ooze a rich and colourful history. But this is no museum piece – with so many sights, activities and major events, the Echuca Moama region radiates an energy and feelgood factor that keeps visitors coming back year after year and locals enjoying a vibrant yet laid back, outdoor lifestyle to rival their city counterparts.

---

***With a combined population of over 20,000, which swells significantly during peak visitor periods, the townships of Echuca and Moama consistently rank amongst the fastest growing towns within their respective states, and it's not hard to see why.***

---

The latest real estate data shows that people are flocking to the region to enjoy the wide open spaces, and stunning, natural environment with almost zero traffic! From the ultra modern, charming inner city Victorian era dwellings, to large out of town acreage with river frontage and bush backdrops, there is a home to suit any budget or lifestyle.







Among Echuca's star attractions is the Port of Echuca Discovery Centre where you can step back in time to 1860 and visit an authentic steam port, explore the revitalised wharf, and watch the steam-driven saw mill in operation.

Riverside fine-dining restaurants, trendy wine bars, alfresco cafes, country-style bakeries, farmers' markets and friendly pubs means you are spoilt for gastronomic choice. Wine touring is also popular, with a dozen or so cellar doors in the region.

With three great rivers – Murray, Goulburn and Campaspe – converging here, fishing, boating, swimming, camping, paddleboarding, biking and bushwalking are naturally big attractions, and nights spent relaxing on a houseboat or watching the sun go down beside a riverside campfire are just a way of life.



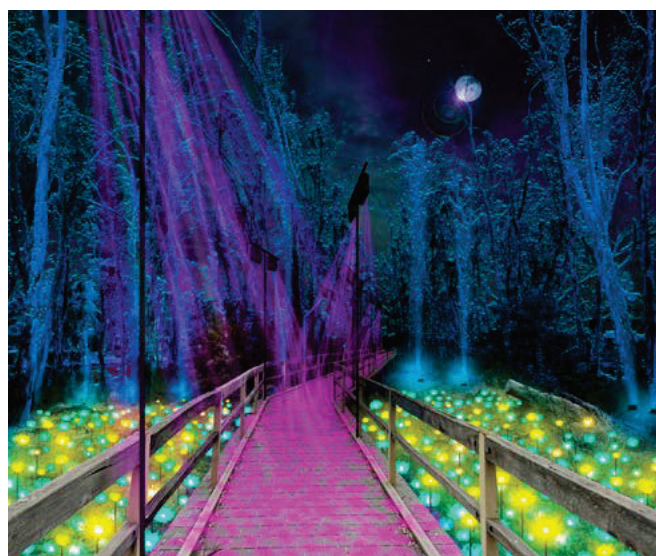
---

***A rich culture is evident in the many art classes, slow living groups, art galleries, dance and theatre groups available for young and old.***

---

Boasting more sunny days than Queensland, the Echuca Moama region has a temperate climate. Summers are hot and dry, spring and autumn are typically warm, and winter mornings that can start out cold and frosty, soon turn bright.

Agriculture is a key industry in the region with a focus on grain, sheep and dairy farming. Together, agriculture, forestry, fishing and manufacturing are the largest employers in the region. Other significant industries include food processing, viticulture, accommodation and food services, manufacturing, construction, retail and health care.





# Education In Faith

---

The rich Brigidine heritage of caring for those most in need is also soundly embedded within the school's culture. Our Ecological and Social Justice groups lead the school in developing a compassionate awareness of our brothers and sisters around the world with whom we can stand in solidarity. The College is active in supporting asylum seekers and raising awareness in our local community about injustices perpetrated against innocent victims. Students and staff are involved in activities relating to the plight of asylum seekers and members of society who are marginalised. Social Justice is a priority in our pastoral care and is increasingly referenced in our curriculum subjects. We are committed to social justice projects working towards creating a better society for us all. Our Eco Justice Climate Action groups work to educate our school community about care of creation and practices for sustainable living.

Our Ecological and Social Justice groups work to raise funds and awareness for CARITAS Australia, the St Vincent de Paul Winter Appeal and the winter sleep-out for homelessness. We also provide assistance to Vinnies for people in need at Christmas time, as well as recognition of important earth care dates such as Clean Up Australia Day, Sandhurst Switches Off and Earth Hour.

St Joseph's is proud of its ongoing association with the local Aboriginal community and is actively committed to the promotion of dialogue and respect between all cultures.



# Learning at St Joseph's College

---

At St Joseph's College we strive to develop liberated learners relating, engaging, inquiring, persevering, challenging, reflecting and learning from each other. An innovative and carefully planned curriculum is central to a successful school. At St Joseph's College, our focus is towards applied learning, with increased empowerment and independence within the classroom, resulting in a strong tradition of excellent outcomes.

The St Joseph's curriculum allows every student to discover their strengths and to master new skills, building strong self-esteem, confidence and creativity. Specialised programs develop the capabilities that underpin flexible and analytical thinking, a capacity to work with others and the ability to move across subject disciplines to develop new areas of expertise. In keeping with our commitment to develop the 'whole person,' each student participates in Religious

Education classes, focusing on our Christian story in the Catholic tradition, Social Justice, Ethics, Prayer, Liturgy and the study of Scripture.

## **YEAR 7: FOUNDATION**

In this first year of secondary education, the emphasis is on developing literacy, numeracy and the deep knowledge of understanding skills and values that will enable advanced learning. Students study a wide range of core subjects and are gradually introduced into specialist areas. The Learning Mentor (LM) Program provides one-on-one support for students in consolidating good work habits and ensuring that family-school contact is well established. Significant use of information communication technology encourages students to become responsible and safe cyber-citizens.





## Learning at St Joseph's College

---

### YEAR 8 and 9: EXPLORATION

By Years 8 and 9, students at St Joseph's College continue to shape their learning through personalised programs and academy opportunities. Our Arts Academy and Sports Academy, offered from Years 7 to 10 by application, are tailored for students who are passionate, driven, and ready to explore their interests in greater depth.

The Arts Academy nurtures aspiring performers and visual artists through enrichment opportunities designed to foster creativity, confidence, and whole-person development. With guidance from the Academy Leaders, students create personalised plans that balance academic studies with their artistic pursuits.

Our Sports Academy offers a similar structure, supporting athletic growth while promoting personal development. Blending theory and practice across a range of sports and industry topics, students work alongside the Sports Academy Leader to design flexible, tailored learning and training programs. The Academy celebrates both academic success and sporting excellence—recognising that the skills built through sport, such as discipline and teamwork, are life-long assets.

Beyond the academies, student-led inquiry is championed across Years 7 to 9. This begins with the Changemaker Program in Year 7, where students explore the question: "What does it take to change the world?" The year concludes with a collaborative inquiry into the vital role of water, including an Immersion Day and student-designed projects.

By Year 9, students participate in Amplify, a future-focused program that replaces traditional classroom structures with experiential, interdisciplinary learning. Amplify fosters curiosity, independence, and collaboration, equipping students with the mindset and skills they will need for success in their senior years and beyond.

### YEAR 10: PATHWAY

In Year 10, students begin shaping their senior pathway, selecting either an Applied Learning Pathway leading into the new VCE Vocational Major or an Academic Pathway within the VCE. Extensive support and counselling help guide each student's choice.

Year 10 students access real-world experiences through programs like the Beacon Real Futures, the Work Experience Program, and the Careers Camp in Melbourne.

Depending on their pathway, students can also accelerate into VCE studies, undertake a VET course, or begin a School-Based Apprenticeship—ensuring they are well-prepared for their chosen direction.

### YEAR 11 AND 12: CONSOLIDATION

At St Joseph's, our Victorian Certificate of Education (VCE) program offers two distinct pathways, allowing students to consolidate their learning and achieve success in line with their future aspirations.

#### Academic Pathway

Students choose from an extensive offering of over 40 VCE subjects, supported by our strong tradition of academic excellence. Early access to VCE subjects is encouraged from Year 10, providing opportunities for students to accelerate their progress. This pathway prepares students for tertiary study and future employment.

#### Applied Learning Pathway

Introduced in 2023, the new VCE Vocational Major enables successful transitions into apprenticeships, traineeships, further study, or employment. Alongside this, the Victorian Pathways Certificate (VPC) offers an alternative route, replacing the former Foundation VCAL. Both pathways provide access to a wide range of Vocational Education and Training (VET) courses, either on campus or through our partnership with Bendigo TAFE's Echuca campus.

#### Positive Learning Framework: Wellbeing and Success

At St Joseph's College, student wellbeing is paramount—our aim is for every student to feel known, valued, and supported to be their best self. We believe that true learning happens in environments where students feel safe, connected, and encouraged to grow.

Our Positive Learning Framework, developed in partnership with Knowledge Society and Classroom Mastery, underpins our approach to classroom learning and behaviour. Effective classroom management at St Joseph's means creating positive, safe, and productive spaces where every student can thrive. Through this framework, we build learning environments where students are empowered to be the best version of themselves—both in the classroom and beyond.

# Co-Curricular Programs

---

Education is as much about firing the imagination and finding creative outlets as it is about the traditional curriculum.

At St Joseph's College, we take great pride in helping every student discover and develop the unique talents, skills, and capabilities that they will treasure for life. We believe in nurturing well-rounded young people who are confident, curious, and prepared to thrive in an ever-changing world. While College life continues to evolve, our commitment remains the same: to provide rich opportunities that allow students to extend themselves, explore their passions, and grow.

Beyond the classroom, we offer a wide array of extracurricular experiences designed to inspire and challenge—from overseas study tours and student exchanges to social justice initiatives, school productions, music tuition, and College performances. Students can participate in bands, choir, and a broad sporting program including athletics, swimming, cross-country, clay shooting, bowls, tennis, soccer, triathlon, cricket, equestrian, basketball, football, and netball—with pathways to Victorian and National representation. Recent senior study tours have included Greece, Italy, and Singapore, enriching students' global perspectives.

Our programs offer meaningful choices, personalised support, and real-world learning to help every student discover their strengths, pursue their passions, and leave St Joseph's ready to thrive.

St Joseph's College Echuca has solidified its reputation as a forward-thinking educational institution with the introduction of its Arts and Sports Academies in 2025. These innovative programs, launched for Year 8 and 9 students and expanding to Years 7–12 in 2026, offer opportunities to nurture creative and athletic talents while promoting personal growth, leadership, and community.

## **The Arts Academy**

Led by industry professionals Alisha Ryan and Cassie Leopold, the Arts Academy immerses students in visual and performing arts through a rich curriculum. Workshops in mask work, puppet theatre, and more encourage creativity and self-expression. Integration with the broader arts community gives students real-world access to events like the Riverboats Music Festival and RippleFest, inspiring critical and creative engagement with culture.

## **The Sports Academy**

Led by Carri Carter, the Sports Academy blends high-performance development with academic support. Students benefit from coaching partnerships with the Bendigo Pioneers, Bendigo Strikers, and Echuca Pirates, and affiliations with the Bendigo Academy of Sport, Human Mechanics, BodyStrong.co, and Synergy Pilates. A highlight is the collaboration with Liverpool FC International Academy Australia, offering students world-class training, leadership development, and exposure to elite sport.





# Student and Staff Profiles

---

St Joseph's College is a vibrant community of people and personalities. We currently have over 1200 students and 190 plus staff but significant population growth in the region and increased demand for Catholic education predicts significant growth in these figures over the coming years, particularly as we transition to a multi campus school. Of those 190 staff, 110 hold teaching positions and 80 are allied staff, in a mixture of full-time and part-time roles.

We pride ourselves on being an employer of choice, and we have the data to back that up, as 40% of our staff have been with the school for more than five years and 20% have been with the school for more than a decade. 10% of our staff have joined us with international experience from the US, Ireland, Italy, Fiji, South Africa, India, Sri Lanka, New Zealand and Zimbabwe bringing with them a wealth of knowledge and breadth of life experience.

---

***Not only are our staff members loyal, but they are also some of the most highly qualified in the sector with 23% holding a Masters Degree or above.***

---

We may be a large school, but we think of St Joseph's College as a big family and that is true in more ways than one, with 37% of staff related to another staff member or at least one student, and 10% of staff who are former students.

Our students are equally diverse, from different backgrounds, religions and cultures. While Echuca Moama is a predominantly Anglo Saxon population, we are proud to currently have 59 Indigenous students enrolled at our school and a small percentage of students and teachers from countries other than Australia.

The majority of our students reside in Echuca Moama, but a number also travel each day from the neighbouring towns of Deniliquin, Rochester, Tongala and Cohuna.

In the senior school we currently have 285 students studying Year 11 and 12 VCE subjects, of which 60 are undertaking VCE/VET and 160 studying a VET subject.

Of those, students approximately 75% will apply for university positions while the other 25% will take on an apprenticeship or traineeship.

Approximately 40% will remain in the local area while the other 60% will spread their wings further afield, often to return later in life to raise their family in our stunning riverside destination.



# House and Pastoral Care Structure

---

*The promotion and support of student wellbeing is a particular hallmark of life at St Joseph's College.*

Seeking to bring the call and promise of the Gospels to life in all that we do, the pastoral care and wellbeing of our students is informed by our Kildare Ministries Core Values, so that each element of adolescence and student life - the academic, social, emotional, spiritual and physical - are further developed and valued. An extensive variety of resources, programs, supports and opportunities are implemented and provided for students during their educational journey at St Joseph's College, including:

- A Learning Mentor and House structure that provides a sense of community, belonging and individual care to support continuous and ongoing mentoring, positive relationships, growth and development.
- Transition programs and support for new students - in particular Year 7 students and their families, transitioning to secondary schooling.
- Retreats, presentations, guest speakers and specialised programs that foster personal reflection, growth and development.
- Leadership programs that encourage, foster and promote servant leadership.

## Houses

We have six Houses at St Joseph's - Brigid, Chisholm, Delany, Moore, Nicholls and Patrick. House Leaders oversee the pastoral care and wellbeing of their students, and lead, support and guide their staff and students to increase connectedness, holistic development and personal growth and achievement. Students belong to their House for the duration of their journey at St Joseph's College.

## Learning Mentor Program

The Learning Mentor program at St Joseph's College provides a conduit between the student, family and school. The Learning Mentor program enables students to develop positive and powerful relationships with their peers and Learning Mentor. It is designed to increase student agency and responsibility while providing support, encouragement and stability. This further enhances student confidence, understanding and belonging.





# Facilities and Master Plan

---

Since our humble beginnings, the College has grown and developed to meet modern academic and pastoral needs. Simultaneously, we have preserved our iconic period architecture, including the centrepiece of our College, the exquisite 1899 Convent Chapel with its marble altar and jewel-like stained glass. The Chapel is at the heart of our daily life, providing a place of gathering in joyful times and in sadness, as well as a quiet, reflective and prayerful oasis for students and staff in the midst of their busy day.

Our historic Hall, built in 1894, continues to be used for drama classes, assemblies, parent nights and special events and the original Apsley House now accommodates our reception, meeting rooms, staff offices, as well as a number of classrooms.

Tradition and contemporary life have always mixed easily at St Joseph's College, where icons, such as the ornate fountain in the forecourt foster a deep sense of stability and permanency, and the massive Oak tree, planted the day the school opened in 1886, sits adjacent from our modern multipurpose building, aptly named The Oak Centre, where the whole school can gather together for assemblies, sports and special events.

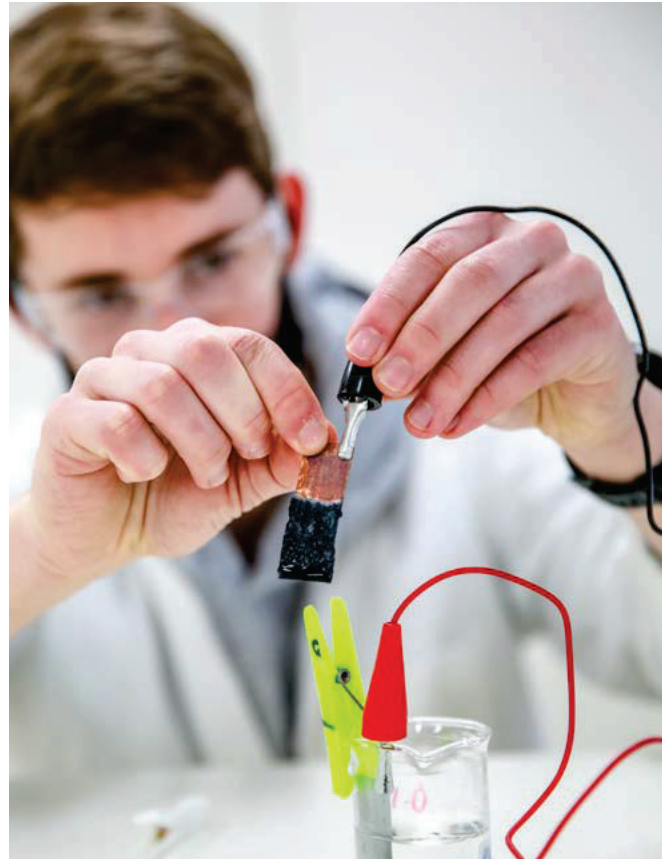
We are proud to offer students access to a state of the art Allied Health facility, complete with sophisticated hospital equipment to enable practical hands-on learning for students interested in a career in the health industry.

In the Design and Technology field we boast a number of creative spaces for students to learn techniques and grow their skills, talents and confidence in art, media, food, wood, metal, textiles and music.

Cill Dara is a heritage-listed house from where we provide Learning Enhancement services. The Brigidines and Presentation Sisters have always been committed to bringing education to the most vulnerable. St Joseph's is proud that we continue that work today with more than 200 students receiving intervention and support from our extended team of more than 20 skilled educators, para professionals and aides.

Our library is overflowing with books to engage readers of any level or interest or to provide a quiet place to study. Our inhouse IT department is only too happy to help with any technical issues.

We are lucky to also have a canteen which provides an ever changing menu of delicious and healthy food made onsite, and which can also cater for large meetings and events.



# One Culture, One Community, One College - Two Campuses

---

## Kildare Campus - Years 7-9.

In 2018, a steering committee was established to investigate the future provision of Catholic education in the Echuca-Moama district.

Extensive research into enrolment numbers, student demand, and projected population growth in the region led to a clear conclusion: our existing site, already under pressure, would not be able to meet the future needs of our community.

---

***The Brigidine Sisters have been offering quality Catholic education in the region for the past 139 years and it was important that we position ourselves to continue the Brigidine tradition for another 139 years - and beyond!***

---

In 2020, a site at 194 Mt Terrick Road, now our Kildare Campus, was secured to ensure the future provision of education. This 80-acre property will allow us to accommodate increasing enrolment demand well into the future.



Construction of the Junior Kildare Campus began in November 2021, and in 2023 we proudly welcomed our inaugural Year 7 cohort. Today, the campus is fully established, catering to students from Years 7 to 9 and offering a vibrant, supportive learning environment.

Stage 2 of our masterplan was completed in 2024. The new Brennan Building, dedicated to technology and the arts, includes science classrooms, art spaces, a general learning space, and facilities for learning enhancement.

Also in 2024, we commenced construction of an AFL-size oval and a soccer pitch. From 2025, students will enjoy full use of the AFL oval, and partnerships with the local community will strengthen engagement and shared use.

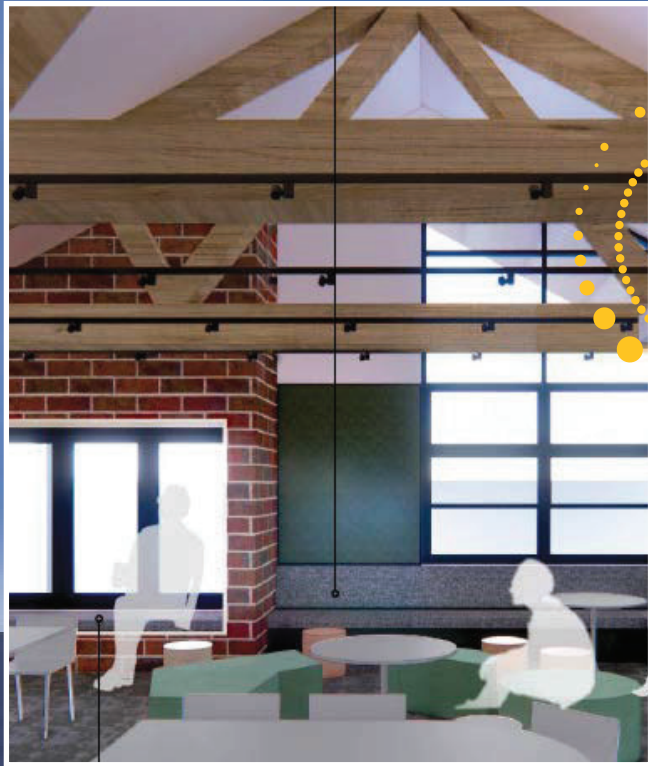
Stage 3, scheduled to begin in Term Three 2025, will bring further transformative developments.

## Brigidine Campus – Years 10 to 12

Refurbishment and Maintenance: In 2025, Brigidine Campus will undergo key upgrades, including modernised toilet blocks and a refreshed Apsley Building with new boardroom and HR office spaces—enhancing comfort, functionality, and campus appeal.







# Application Process

## Applicants must complete:

- The Application Form - click [here](#) to access.
- A covering letter responding to the selection criteria and key information in the position description. Should be no more than two A4 pages.
- A current Curriculum Vitae, including three referees such as your current employer, a member of a faith community and one other person of choice.

## **Applications should be addressed to:**

### **Ms Anne Marie Cairns**

Principal, St Joseph's College Echuca  
and emailed to: [principal@sje.vic.edu.au](mailto:principal@sje.vic.edu.au)

## **Once confirmed for an interview, the applicant will be required to supply the following:**

- A certified copy of your current Victorian Institute of Teaching Registration Card.
- Catholic Education Accreditation status.

## Selection and Appointment Schedule

### **Applications Close:**

5pm on Friday 23 May 2025

### **Shortlisting:**

Monday 26 May 2025

**Interviews:** Thursday 29 May and  
Friday 30 May 2025

## **For further enquiries please contact:**

### **Maree McNamara**

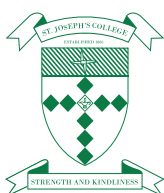
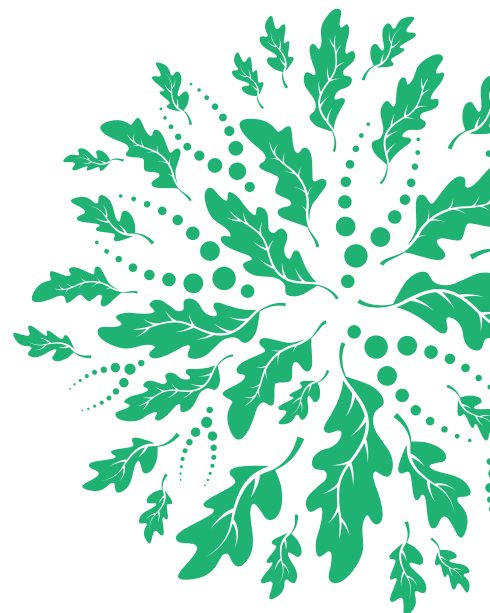
Executive Assistant

Phone: 03 5469 0204

Email: [mmcnamara@sje.vic.edu.au](mailto:mmcnamara@sje.vic.edu.au)

## **Selection Criteria:**

- A commitment to Catholic Education.
- Demonstrate effective leadership in Catholic Education or another educational setting, sound management and interpersonal skills.
- A sound grasp of current educational thought and practice, particularly in the context of the role.
- Post Graduate Studies in leadership, or a willingness to undertake further study relevant to the primary focus of the role.
- Demonstrate an ability and capacity to meet the responsibilities of the role as outlined in the role descriptions.



St. Joseph's College  
21 Dickson Street Echuca, Victoria 3564  
P. 03 5482 2577 | W. [www.sje.vic.edu.au](http://www.sje.vic.edu.au)